

Featured Program Activities

- Analyze data , read about Nepal and identify issues (health, environment, culture, people, and development challenges). Help design and develop community service-learning projects.
- Travel to Nepal and help implement community projects. Help generate research data from community projects for future analysis and help promote evidence-based learning.
- Participate in a one-week long multifaceted sustainable development observational tour of the surrounding landscape to see and feel sustainable development in action. Help identify potential community-learning project ideas for future.
- Disseminate experiential knowledge and research outputs on return through posters, presentations, papers, research notes, and policy briefs. Help promote eco-tourism.



PRATIMAN-NEEMA
MEMORIAL FOUNDATION

The University of
New Mexico
www.unm.edu

Pratiman-Neema
Memorial Foundation
www.pnfoundation.org.np

**Sustainable Development Lab
Nepal Study Center
Department of Economics
University of New Mexico**

For more information:

Dr. Alok K. Bohara, Professor of Economics, UNM
Bohara@unm.edu, 505 277-5304

&

Michael Benjamin Goodwin, Graduate Instructor
Department of Economics
mbengoodwin@unm.edu



For an outline of the program structure and itinerary please visit the websites:

<http://pnfoundation.org.np/lumbini-sustainability-circle-study-abroad-program/>

&

<http://nepalstudycenter.unm.edu/SustainableResearchLab/UndergraduaterResearchInitiatives.html>



Himalayan Study Abroad Program Urban Health & Environment

Taking the Classroom to the Field

Seeking Solutions to Urban *water, air, & ecological* Pollution Problems through Citizen Science

Building Interdisciplinary STEM Tools from Natural Sciences, Social Sciences, and Humanities

Linking New Mexico Environmental Initiatives to Nepal Efforts



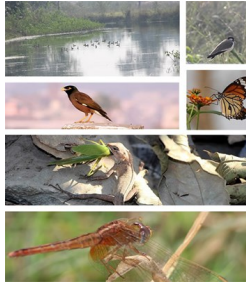
nepalstudycenter@unm.edu

Study Abroad in Nepal

A Three-step STEM-driven Interdisciplinary Learning Experience

An experiential learning experience that combines **research, hands-on community service-learning projects, & eco-adventure.**

Nothing can replace a uniquely immersive experience that takes students to Nepal, where they can experience the sights, sounds, and spirits of the magnificent rural communities, their people, their cultures, and the bio-surroundings. This experiential learning, when combined with rigorous research, inquiry, and investigation, can open doors to personal growth and academic maturity.



- **Analyze:** Analyzing the real-world data from the ground (Econ 395: Problem-Based Learning Using Data Analytics).
- **Deliberate:** Offer practical interventions/solutions (e.g., long-term citizen science monitoring program: *water, air, and ecology; sustainable technologies*)
- **Implement:** Through the study abroad trip, implement some of the solutions on the ground in collaboration with our international partners.

Community Service-learning Project

At the heart of this program is the interdisciplinary collaborative community service learning component that invites students from any discipline to join hands to analyze existing problems in the community and offer solutions.

Examples of the possible community projects under consideration in the urban town of Siddharthanagar are:

- Long-term water quality monitoring
- Air quality monitoring
- Urban Wildlife Refuge concept design
- River festival and awareness



Lumbini Sustainability Circle: An Eco-adventure Loop

Loop

This one-week long road trip will allow students to observe first-hand some of the sustainable development related challenges as well as solutions found all across the diverse landscape of western Nepal. Some activities include:

- Visit the Madhane Conservation area to tour a health clinic, observing their organic farming and indoor pollution programs
- Visit an eco-spiritual center and take a nature hike
- Hike a hill-top bird sanctuary in Tamghas Valley
- Visit the Gandaki River valley town of Ridi
- Experience an elephant ride in Chitwan National Park to observe rhinos

Program

Costs

The fee for the study abroad program will be approximately \$2000±250 ; 12/16/17—1/6/18. **The following is included:**

- Room and board (breakfast and lunch)
- Local transportation
- Field trips and nature hiking
- Guest lectures, labs, testing kits, focus groups



PNMF's college campus

Not included in the program fee:

- Tuition (for those wishing to earn class credit for study abroad)
- Roundtrip airfare to Kathmandu
- Passport fee
- Dinners
- Mandatory travel insurance (approx. \$36)
- Other personal expenses

Limited travel grants are available from UNM and other sources. Students are encouraged to apply for UNM's Regents International Study Grants and International Studies Institute Scholarships & other opportunities.

Danda River Riparian Area: Long-term Ecological Monitoring and Urban Wildlife Refuge Site

